

INTERNATIONAL ROLL-CALL® CORPORATION

PRESENTS

xmOverlayCG:
Broadcast-ready.
Chamber-focused.
Purpose-built.

AUGUST 2025 VERSION

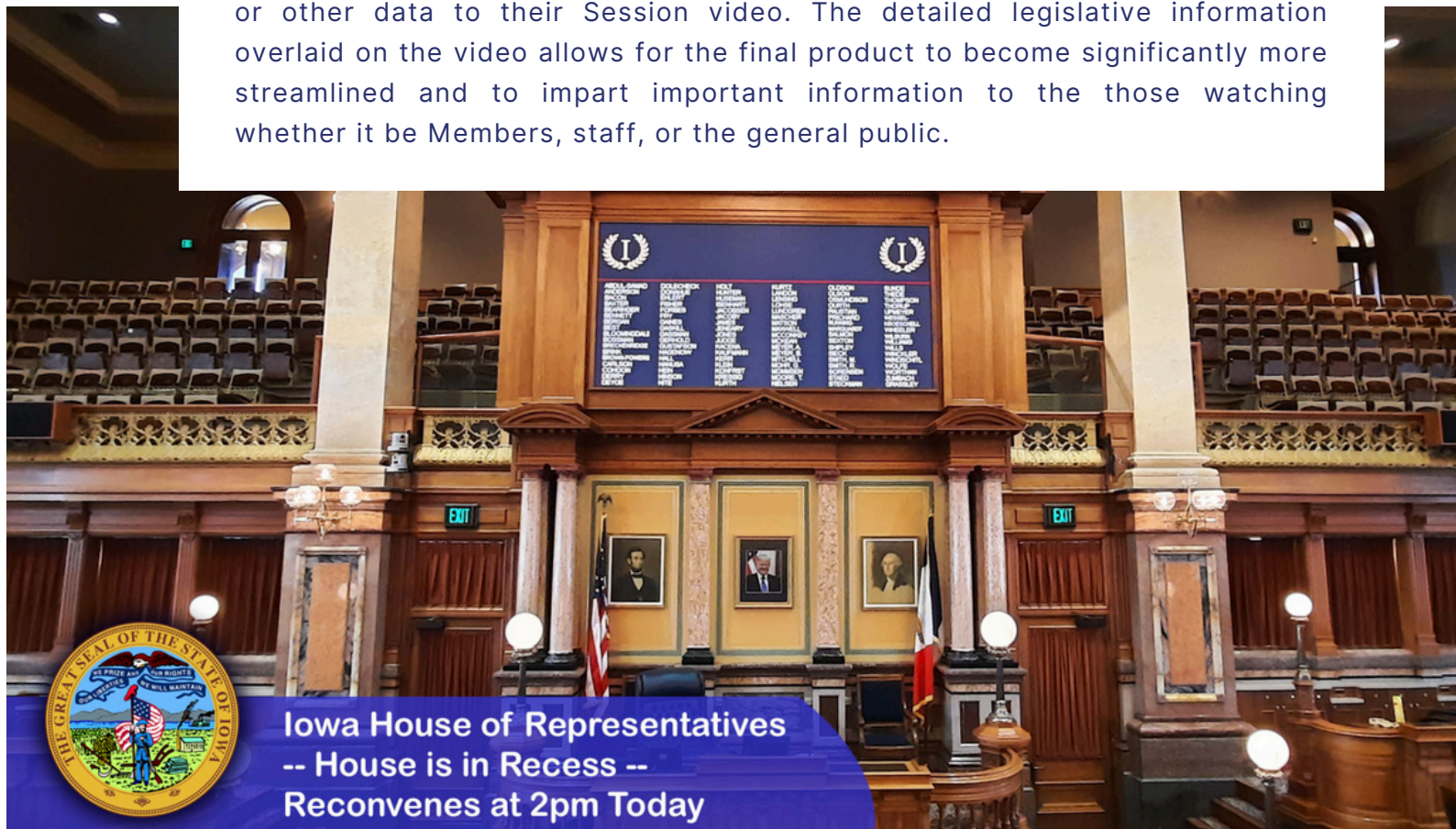


INTERNATIONAL ROLL-CALL® CORPORATION
5316 PATTERSON AVENUE, RICHMOND, VIRGINIA 23226
(804) 730-9600 | WWW.ROLL-CALL.COM

XMOVERLAYCG: BROADCAST-READY. >>> CHAMBER-FOCUSED. PURPOSE-BUILT.

International Roll-Call® Corporation’s xmOverlayCG is more than a broadcast tool—it’s the product of decades of specialization in legislative technology. As the nation’s leading provider of voting, display, and legislative process solutions, IRC designs purpose-built systems that integrate seamlessly into the unique workflows of legislative chambers, delivering clarity, transparency, and efficiency to every session.

International Roll-Call® Corporation has extensive experience interfacing with a wide variety of video character generator (CG) systems in legislative Chambers across the United States. Video CG systems are used to place text and graphics over a live or recorded video feed. Such CG systems are very useful for legislative Chamber video broadcasts by enabling legislatures to add the bill number, bill sponsor, name of the Member speaking, vote totals, or other data to their Session video. The detailed legislative information overlaid on the video allows for the final product to become significantly more streamlined and to impart important information to the those watching whether it be Members, staff, or the general public.



Iowa House of Representatives
-- House is in Recess --
Reconvenes at 2pm Today

Experience has shown us that most CG systems are costly and are often overly complicated for the defined and nuanced needs of State Legislatures. With this knowledge coupled with our commitment to serving State Legislatures and the legislative process, IRC has devoted significant time and resources toward the development of a proprietary CG system: the IRC xmOverlayCG.



Page displaying message information to the public.

With xmOverlayCG, users can design multiple layouts—including main chamber views, speaker identification screens, and vote result displays—tailored to the specific needs of each session. The interface provides precise control over text fields, fonts, colors, images, and positioning, enabling the display of key legislative information such as:

- Bill numbers and titles
- Member names and speaking status
- Vote totals and timestamps
- District maps, sponsor photos, and chamber or state seals

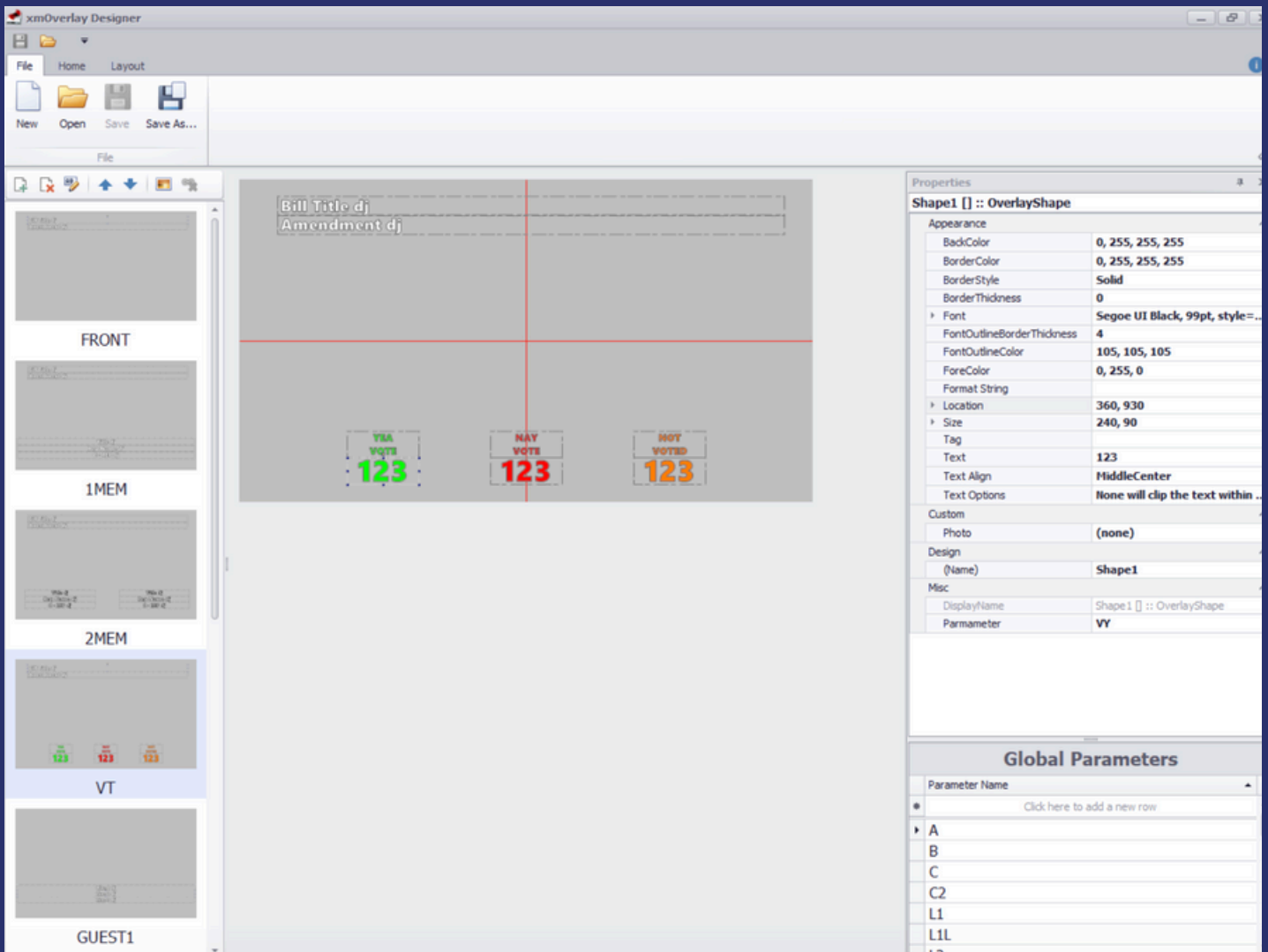
Automated page transitions can be triggered by real-time activity, ensuring dynamic, up-to-date visuals without manual intervention. The result is a professional, consistent, and flexible broadcast presentation aligned with any legislature's identity.



Technical Capabilities

Engineered for long-term compatibility, the xmOverlayCG operates seamlessly with Windows 10 and is ready for future Windows OS updates. It supports SD-SDI, HD, and UltraHD (4K) video standards—ensuring integration with a wide range of current and emerging broadcast technologies.

The system is delivered as a complete hardware/software package, consisting of a high-performance PC with a dedicated video card running IRC's proprietary xmOverlayCG software. Designed to integrate natively with IRC's xmLegislator™ voting software, xmOverlayCG can extract and display real-time legislative data with unmatched speed and accuracy—capabilities that generic third-party systems cannot replicate.



xmOverlayCG Designer allows the ability to customize the layout of each PAGE for display.

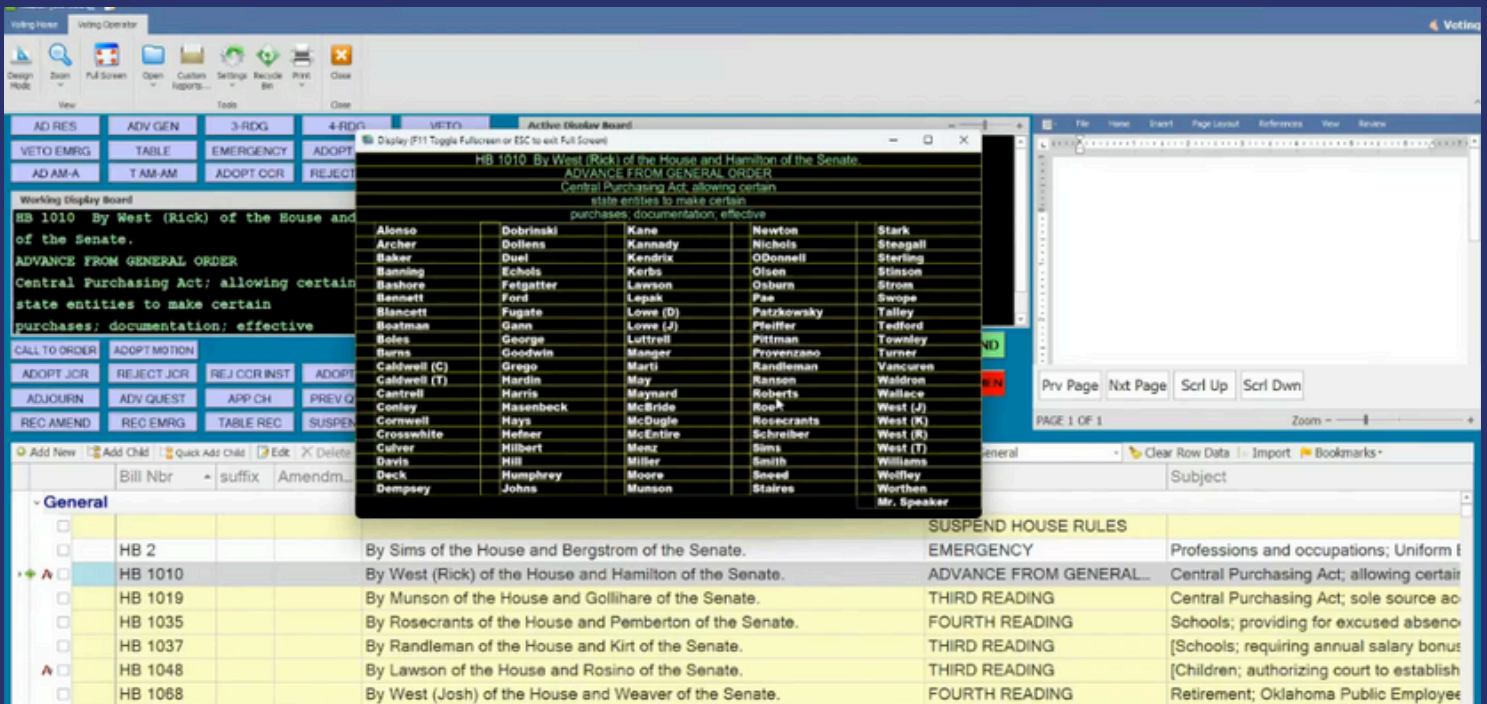


Integration with xmDisplay

For enhanced flexibility, xmOverlayCG can be paired with IRC's xmDisplay application. This integration allows legislative chambers to:

- Overlay live vote visuals and chamber data on top of broadcast feeds
- Display information on public monitors, overflow room screens, or in streaming and cable broadcasts
- Automatically update layouts with member names, vote totals, bill information, and speaker identification as the session progresses

The combined xmOverlayCG and xmDisplay solution delivers a comprehensive, real-time visual presentation system that improves public transparency, enhances viewer engagement, and streamlines chamber operations.



xmDisplay running standalone displaying Member names



BOTH XMOVERLAYCG AND XMDISPLAY DELIVER A COMPLETE, PURPOSE-BUILT SOLUTION FOR CLEAR, REAL-TIME LEGISLATIVE BROADCASTING. DESIGNED FOR THE UNIQUE NEEDS OF STATE LEGISLATURES, THEY ENHANCE TRANSPARENCY, ENGAGE THE PUBLIC, AND ENSURE EVERY SESSION IS PRESENTED WITH UNMATCHED CLARITY AND PROFESSIONALISM.

PARTNER WITH INTERNATIONAL
ROLL-CALL® CORPORATION