

# INTERNATIONAL ROLL-CALL<sup>®</sup> CORPORATION

PRESENTS

## Script Assistant: A Floor Script Solution for State Legislatures

JANUARY 2026 VERSION

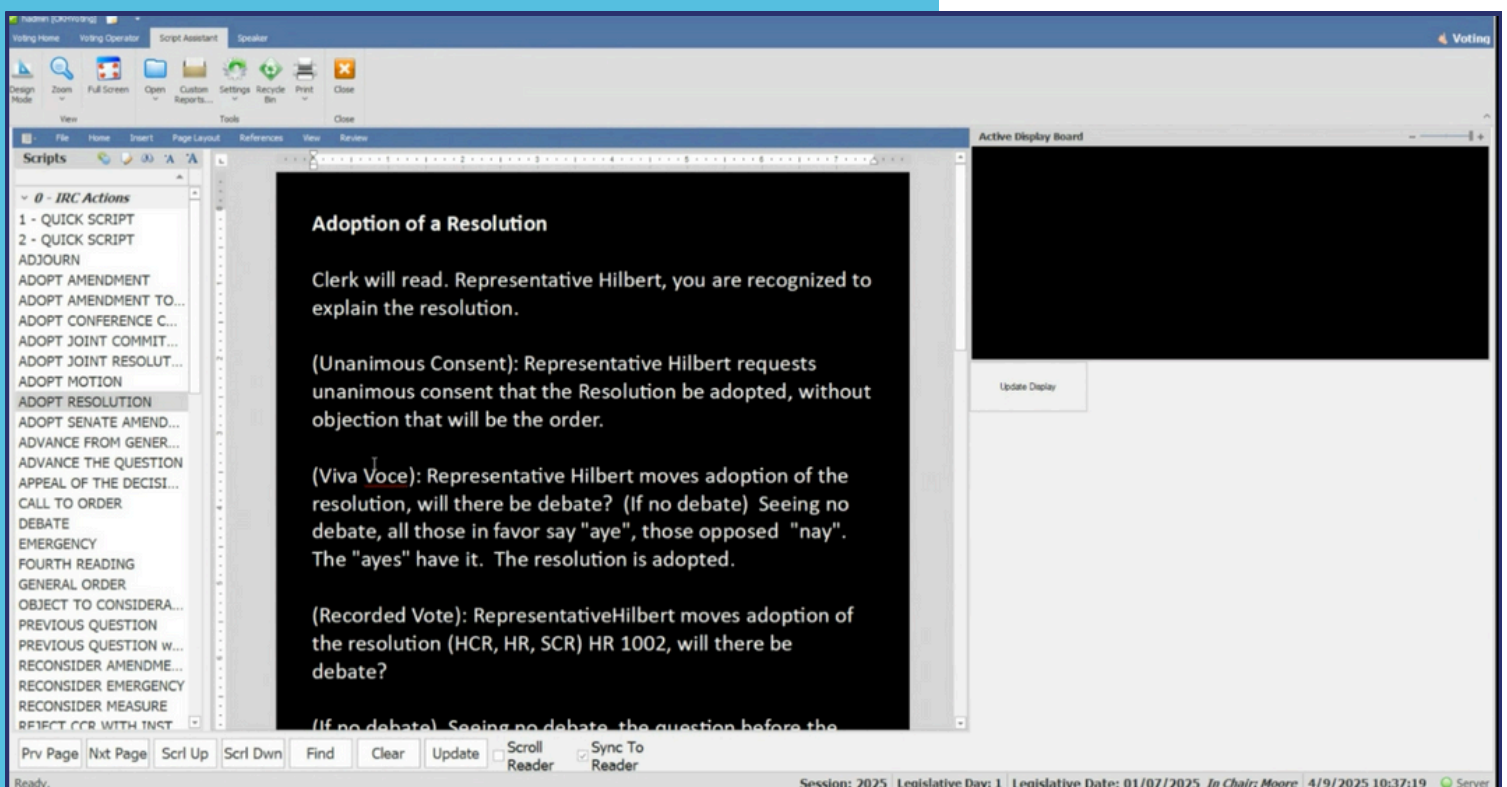


INTERNATIONAL ROLL-CALL<sup>®</sup> CORPORATION  
5316 PATTERSON AVENUE, RICHMOND, VIRGINIA 23226  
(804) 730-9600 | [WWW.ROLL-CALL.COM](http://WWW.ROLL-CALL.COM)

# SCRIPT ASSISTANT: A FLOOR SCRIPT SOLUTION FOR STATE LEGISLATURES

Script Assistant is intelligent floor script management software that empowers clerks, presiding officers, and legislative staff to manage and present floor scripts with precision and confidence. Operating as either a standalone application or an integrated module within International Roll-Call's (IRC) xmLegislator™ platform, it delivers dynamic, real-time legislative language scripts that automatically reflect floor activity.

When a motion or bill is displayed to the Chamber, Script Assistant automatically recognizes the active item and displays the correct script on the screen, pre-filled with key details such as bill numbers, sponsors, titles, and other contextual data. Legislative leaders do not have to hunt for language or guess what comes next; the right words and motions are already in front of them, tailored to the current action. The application is extremely valuable when someone steps in mid-session for an emergency or due to an absence — they are prepared and do not need to guess what to say; the script is right there ready for use.



SAMPLE SCRIPT LIST AND DISPLAYED SCRIPT

# How Script Assistant Works >>>

Script Assistant is tightly linked to the legislative workflow and operates through a simple three-step process:

1. When a calendar item and motion are selected and sent to the chamber displays, Script Assistant detects that motion.
2. If there is a script with a matching motion name, Script Assistant automatically pulls and displays that script for the appropriate users (e.g., Speaker, President, Clerk, floor leaders, etc.).
3. Any field codes embedded in the script (such as bill number, short title, sponsor, Chamber, etc.) are filled in by the xmLegislator™ live data.

This seamless connection between **motions** → **scripts** → **live data** ensures that spoken proceedings stay aligned with the actual legislative record.

## Key Features & Benefits

### // *Smart Script Recognition:*

- Detects the active motion on the Chamber floor
- Automatically displays the script associated with that motion as soon as the item is sent to the displays
- Automatically fills in bill numbers, sponsors, titles, and other data via field codes, keeping scripts accurate and current

### // *Real-Time Editing & Management:*

- Authorized users can create, edit, and organize their own scripts from a full-featured rich text editor, adhering to each Chamber's specific rules and traditions
- Import existing Microsoft Word documents or build scripts from scratch.
- Use field codes to insert live legislative data directly into scripts
- Duplicate, rearrange, or retire scripts as rules and practices evolve

### // *Reader Groups & Role-Based Access:*

- Configure reader groups (e.g. Presiding Officer, Clerk, Party Leadership, Floor Managers)
- Assign different scripts to the same motion for different roles — for example, one version for the Presiding Officer and another for the Clerk or Floor Leader
- Control access and visibility while ensuring all users remain aligned to the same underlying motion

*//Coordinated Reader-Editor Interface or Synchronized Staff and Leadership Views:*

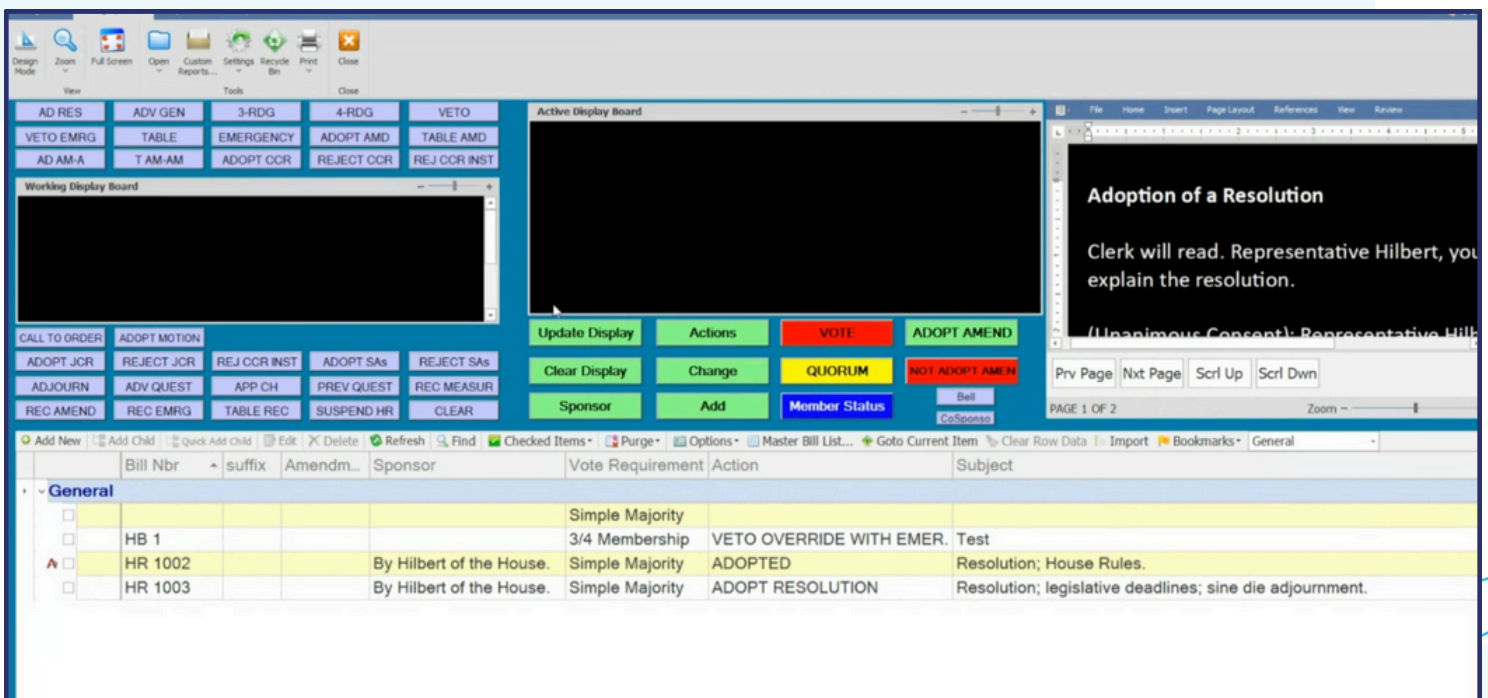
- Separate reader and editor layouts allow staff to manage content behind the scenes while leadership sees a clean display
- Staff can remotely control scrolling for the Presiding Officer, ensuring the displayed script stays synchronized with spoken proceedings
- “Sync to reader” functions let editors jump back to whatever script the Speaker is currently using

*// Seamless Integration & Standalone Flexibility:*

- Integrates directly with IRC's xmLegislator™, using its motions, calendars, and data fields
- Available as a standalone application, also making the solution ideal for:
  - Deployment within Chambers without the full xmLegislator™ solution
  - Scripting workflow for committees or subcommittees
  - Professional script management for other legislative entities including local governments

*// Tailored for Complex Legislative Environments:*

- Integrates with debate and floor management tools so scripted remarks can track with the order of business, amendments, and special actions
- Designed to adapt to each chamber's unique rules, traditions, and presiding styles



SAMPLE SCRIPT ASSISTANT SCREEN EMBEDDED WITHIN XMLLEGISLATOR™ HOME SCREEN

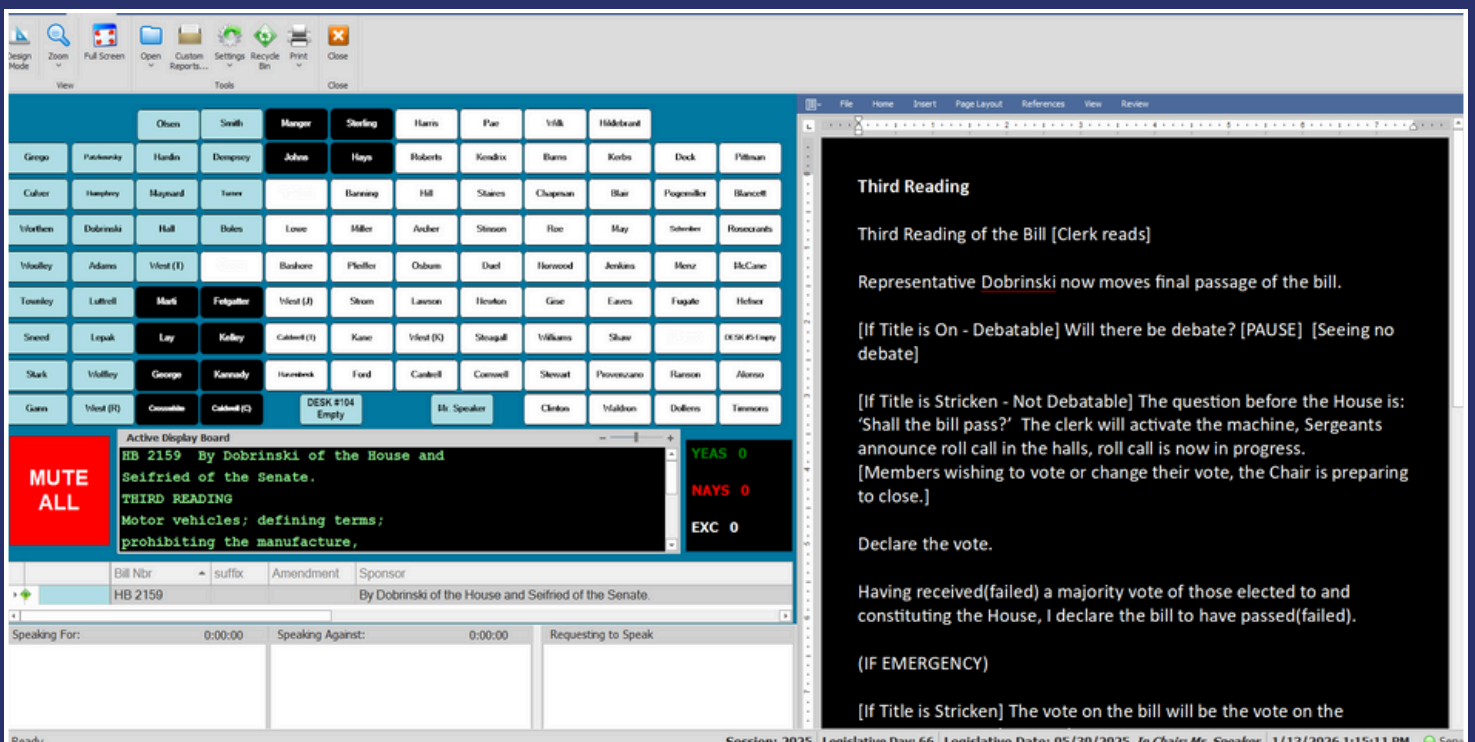
# Current Adoption & Use Cases >>>

Script Assistant is already trusted by multiple legislative Chambers, with active use in the:

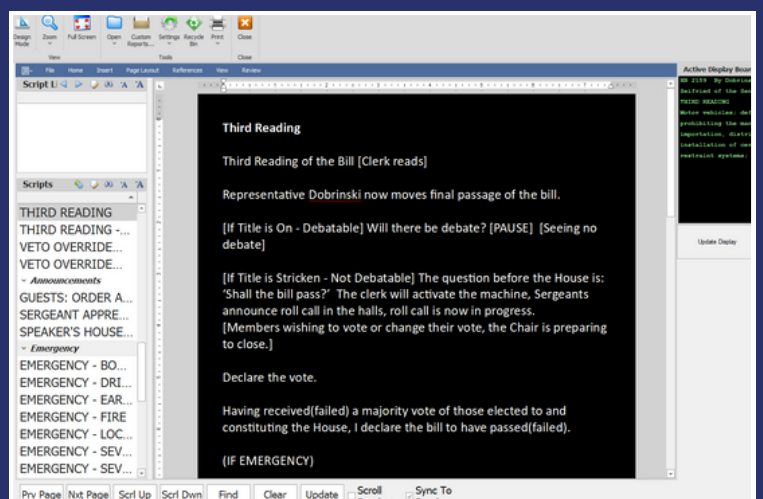
- Georgia Senate
- Kansas House of Representatives
- Oklahoma House of Representatives & Senate
- Oregon House of Representatives
- Pennsylvania Senate

## Oklahoma House of Representatives

What the speaker sees: The text of the script and the bill data within the script are based on what bill is displayed on the board and the motion associated to the bill.



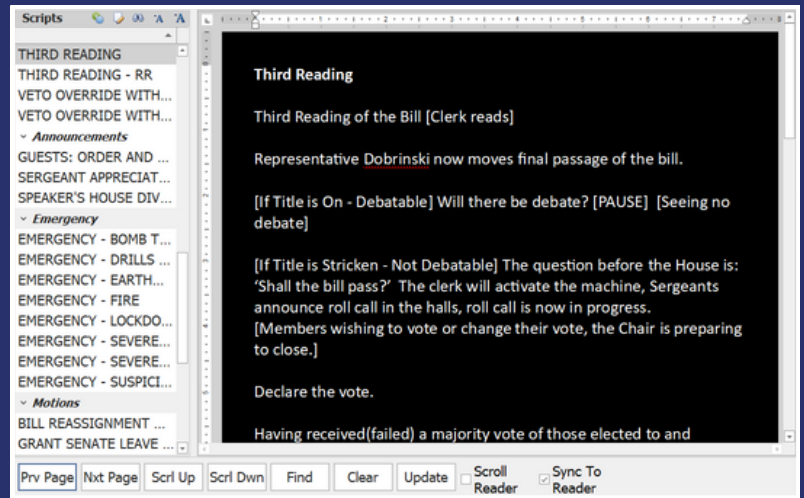
The editor screen can be used to organize, create, edit, and modify scripts, as well as import scripts, and create lists of scripts that can be ran through in a slideshow format.



The Oklahoma House of Representatives also utilizes the stand-alone Script Assistant application that doesn't require xmLegislator™ to run:

*The Script Assistant has become an indispensable tool for ensuring that Members and staff are prepared for anything and everything that arises during legislative sessions. Its ability to dynamically populate scripts means we're getting the words right—every time. This precision not only boosts confidence on the Floor but also reinforces procedural integrity and clarity in real-time.*

-Oklahoma House of Representatives Staff



## Pennsylvania Senate

Organizing scripts and displaying multiple different scripts simultaneously: Developed at the request of the Pennsylvania Senate, this enhancement builds on IRC's long-standing ability to display scripts on multiple screens. It introduces powerful tools to organize scripts, manage script lists, and configure reader groups, allowing different scripts to be shown on different authorized screens at the same time. This ensures leadership, Clerks, and operators stay aligned as floor activity shifts in real time.

### Common use cases include:

- **Speakers & Presiding Officers** – Script Assistant ensures that Speakers and Presiding Officers always know what to say and in what order, even when proceedings move quickly.
- **Clerks & Secretaries** – Build, maintain, and update master script libraries and provide support to Chamber leadership in real time.
- **New or Temporary Presiding Officers** – Have Members step in mid-session with confidence, reading from guided scripts that reflect the live calendar and motions.
- **Chambers with Automation** – Extend access to scripts beyond the dais by leveraging Script Assistant's RTF output in broader chamber automation environments.



SCRIPT ASSISTANT IS MORE THAN JUST A SCRIPTING TOOL—IT IS A PRECISION TOOL FOR PARLIAMENTARY PROCEDURE. PARTNER WITH INTERNATIONAL ROLL-CALL® TO BRING THIS CAPABILITY TO YOUR CHAMBER. OUR TEAM WORKS CLOSELY WITH CLERKS, PRESIDING OFFICERS, AND LEGISLATIVE IT STAFF TO INTEGRATE SCRIPT ASSISTANT INTO YOUR EXISTING WORKFLOWS, IMPORT YOUR EXISTING SCRIPT LIBRARIES, AND CONFIGURE MOTIONS, READER GROUPS, AND DATA FIELDS TO MATCH YOUR RULES AND TRADITIONS.

PARTNER WITH INTERNATIONAL  
ROLL-CALL CORPORATION